

# Kultur Cabinets

## Hinge/Drawer/Doors



### Door hinge adjustment instructions

#### Three-dimensional adjustments

##### Side to side adjustments

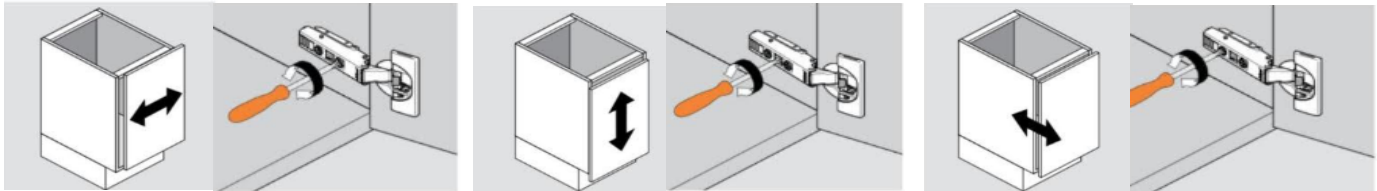
Turn front screw to increase or decrease door overlay (+/- 2mm).

##### Height adjustments

Rotate cam Screw-on mounting plate to adjust door position (+/- 2mm). On non-cam mounting plates, loosen screw, adjust door and retighten screw

##### Depth adjustments

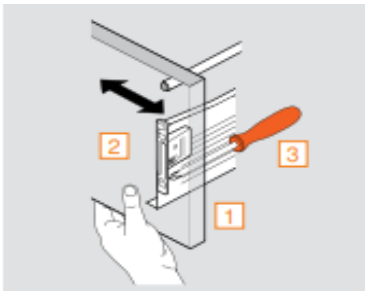
Turn rear spiral-tech cam to adjust door position (+3mm, - 2mm). For CLIP. Loosen rear screw, adjust and retighten screw



### Metal Drawer System adjustment instructions

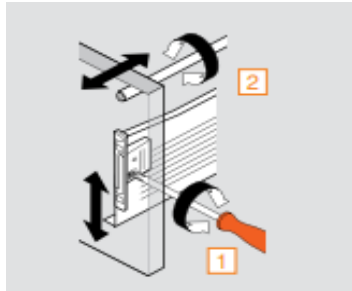
#### Lateral (side-to-side) Adjustment

1. Loosen two screws holding each front to the mounting clip.
2. Adjust the door left or right as needed for the proper alignment
3. Re-tighten screws after adjustment



#### Vertical Adjustment

1. Turn the recessed adjuster screw to adjust the front up or down as needed
2. Make sure the front is sitting flush vertically and re-tighten the locking screw



### Wood Box drawer front adjustment instructions

1. Our wooden drawer boxes have two oversized holes allowing for drawer face adjustment
2. Loosen two screws in side drawer which holds drawer face.
3. Adjust the drawer left or right and up or down as needed for the proper alignment
4. Re-tighten screws after adjustment and re-check alignment. **Note: Make sure these adjustments are made prior to installing the handles**

